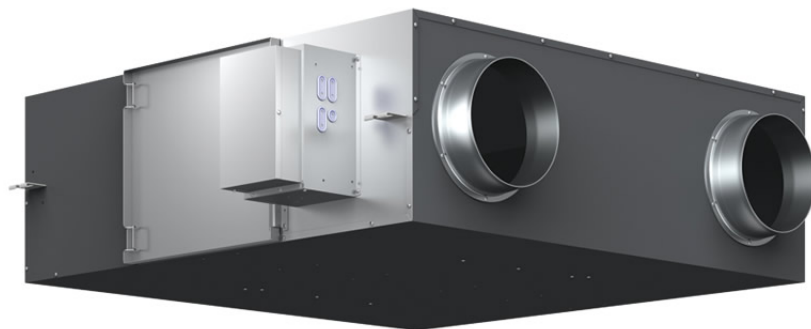


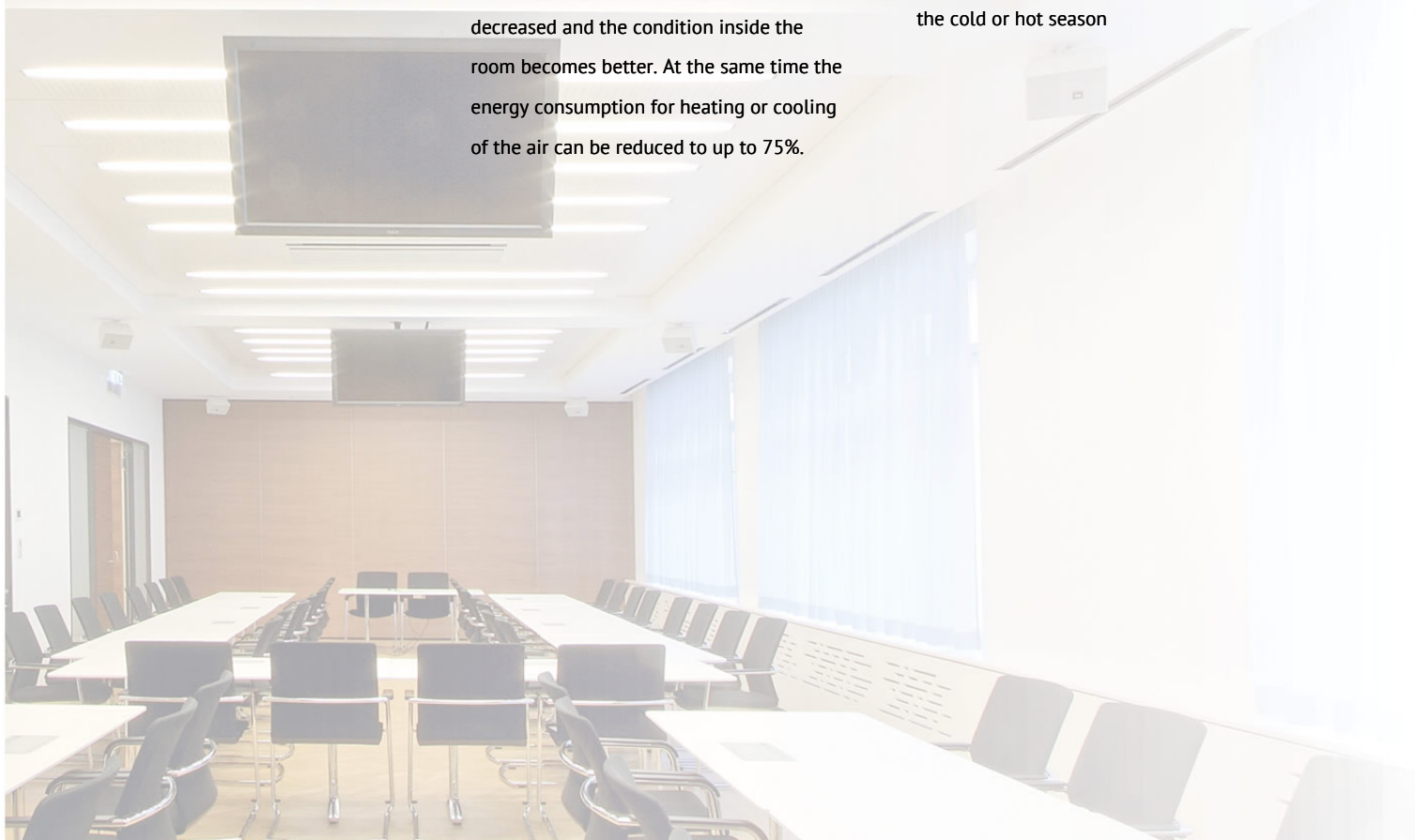
- FRESH AIR VENTILATION
- HIGH ENERGY EFFICIENCY



AIR-TO-AIR HEAT EXCHANGER

The units for heat recovery use the waist heat to condition the supply air. So the demand for the air conditioner can be decreased and the condition inside the room becomes better. At the same time the energy consumption for heating or cooling of the air can be reduced to up to 75%.

- 9 sizes with air-volume of 150 to 2000 m³/h available
- Recovery up to 75% of the energy of the waist air
- Increasing of the energy efficiency, particularly during the cold or hot season



Indoor unit			
Power supply	V		230
Power consumption (cooling)	kW	•	0,206
Power consumption (heating)	kW	•	0,206
Dimensions (H/W/D)	mm		1140/1140/350
Air power	m ³ /h		390/500
Sound pressure level (cooling)	db(A)	•	24,50/33,50
Pipe connections			200
Outdoor temperature (cooling)	°C	•	-15 - +43
Outdoor temperature (heating)	°C	•	-15 - +43

Toshiba sales partner: